

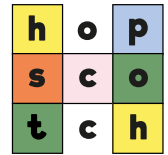


CHILDREN'S NURSERIES

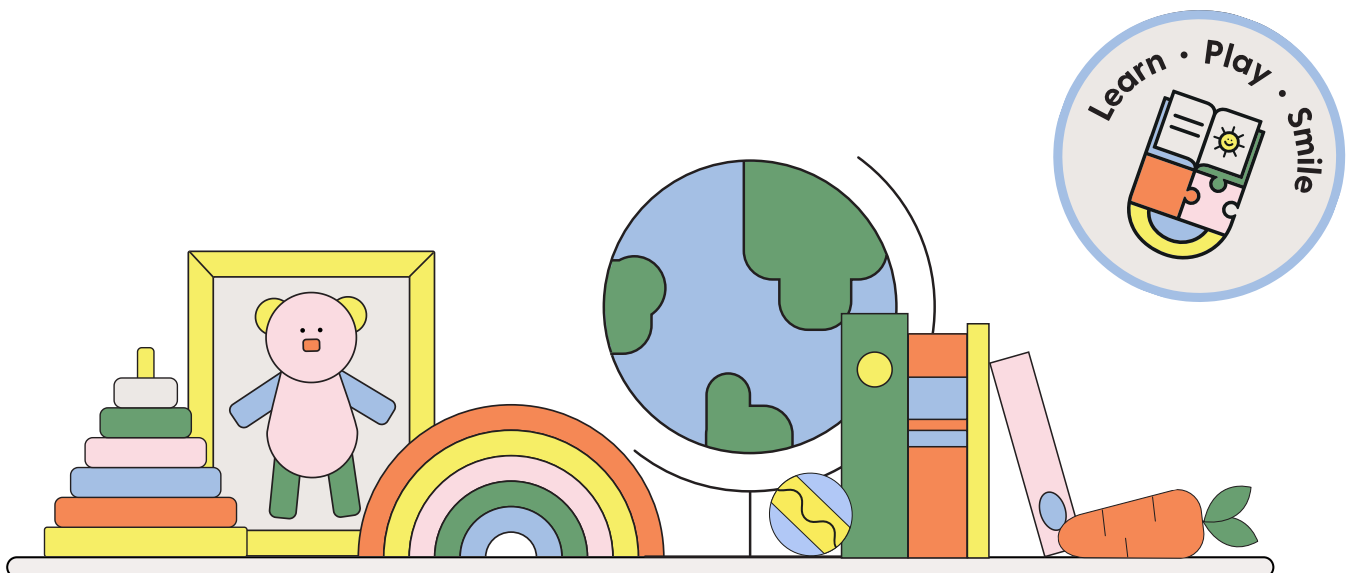
# Nursery Fees and Funding

Hopscotch Seaford

# Nurturing happy and independent children



Our nursery is set in a converted school in the heart of Seaford. Its large, airy, and spacious layout effectively supports our children's development. Our rooms are well resourced and furnished to a high standard with Community Playthings wooden equipment. The literacy room provides a calm environment for preschool children to take part in focused activities.



# Our Fees

- Fees include breakfast, baby formula, snacks, organic milk, nappies and some extracurricular activities
- Hot Lunch can be added for £3.98 per meal
- Cold tea can be added for £2.60 per meal
- Places are all year round for 51 weeks per year
- We are closed on all Bank Holidays & Christmas week for which no fees are charged
- Fees are due for all other absences, including holidays and sickness
- Any non-standard sessions may be charged at an individual rate

## Children aged 0 to under 5 years (no funding applied)

Session	Time	Fee	Weekly Fee
Full day	8am to 5.30pm	£57.50	£287.50
Full morning	8am to 12.30pm	£31.00	£155.00
Full afternoon	1.30pm to 5.30pm	£29.00	£145.00
School Day <i>Limited availability</i>	8am to 3pm	£47.50	£237.50

## Additional Sessions

Session	Time	Fee	Weekly Fee
Early start	7.30am to 8am	£7.00	£35.00
Extra lunch hour	12.30pm to 1.30pm	£7.00	£35.00
Late finish	5.30pm to 6pm	£7.00	£35.00

# Our Fees

## School Holiday Club (children up to 8 years old)

Session	Time	Fee	Weekly Fee
Full day	8am to 5.30pm	£44.00	£220.00
Full morning	8am to 12.30pm	£22.00	£110.00
Full afternoon	1.30pm to 5.30pm	£22.00	£110.00
School Day	8am to 3pm	£33.00	£165.00

## Children aged 3-4 years old (including funding)

Session	Time	Fee
Full day (including 6 hours funding)	8am to 5.30pm	£26.90
Full day (including 3 hours funding)	8am to 5.30pm	£42.20
Full morning (including 3 hours funding)	8am to 12.30pm	£15.70
Full afternoon (including 3 hours funding)	1.30pm to 5.30pm	£13.70
School day (including 3 hours funding)	8am to 3pm	£32.20

Full fees are applicable during the 4 non-funded weeks per academic year.

For 2023/2024 these are:

18 December 2023 | 1 April 2024 | 8 April 2024 | 26 August 2024



# Funding

We understand funding for childcare can be complicated! We want to help make things as simple as possible and support our families every step of the way. We have a wealth of knowledge about funding and will try to answer any questions you have.

## Eligibility

Universal funding is available from the term after your child's 3rd birthday - we suggest you visit [www.chilcarechoices.gov.uk](http://www.chilcarechoices.gov.uk) for more information and to understand more about the eligibility criteria.

Continued →



The standard 15 or 30 hours funding is usually spread over 38 weeks of the year.

We stretch our funding to apply up to 12 or 24 hours funding over 47 weeks of the year.

This means it is applied more consistently over the course of the year.

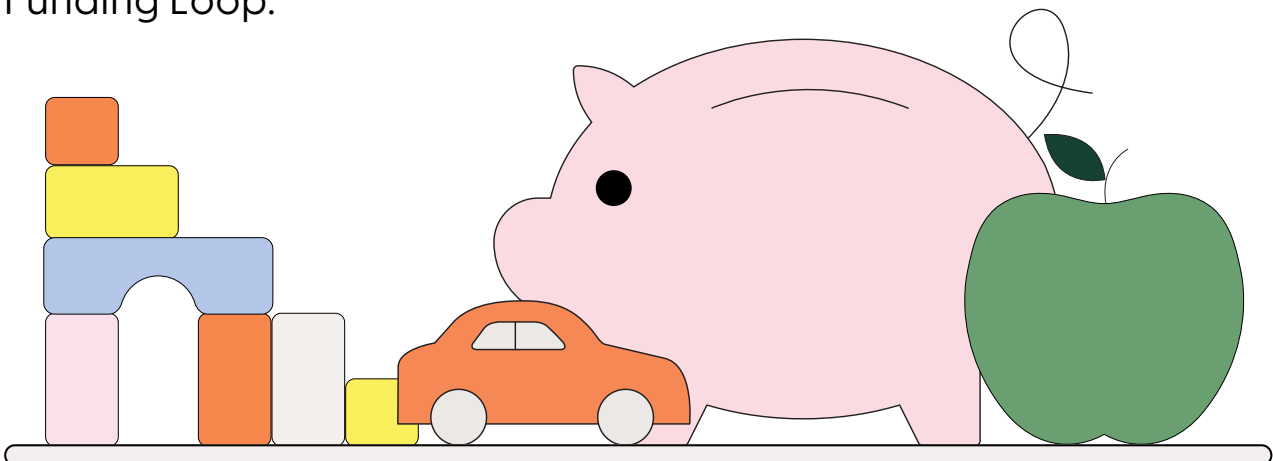
## Applying for Funding

To apply funding to your invoices, we need you to complete and sign a Parent Declaration Form. This will be submitted to the relevant Local Authority by us on your behalf.

This will be emailed to you by Hopscotch Head Office via Funding Loop.

Some families might also be entitled to funding for 2 year old children.

Please speak to your nursery manager if you think this is the case and they will be able to advise on how to proceed.



# Fully Funded Sessions

Fully funded standalone sessions may be available upon request. These are allocated on a termly basis and are subject to availability.

Session	Does not include product pack
Monday to Friday 1.30pm to 5.30pm  Fridays only 9.30am to 1.30pm	Snack Nappies Wipes and creams Suncream Peripatetic Lessons (when applicable) Arts & Crafts Materials Local Trips and Visits

Optional Extras	
Product Pack as above	£7.00 for half day £9.00 for full day (Fridays only)
Hot Lunch	£3.98 per meal
Cold Tea	£2.60 per meal
Friday 8am to 9.30am	£10.50
Extra lunch hour - 12.30 to 1.30pm	£7.00

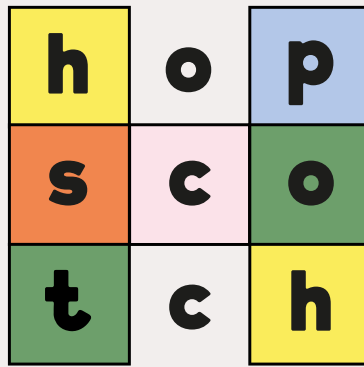
Please speak to your nursery manager regarding fully funded session availability.



[seaford@hopscotchmail.com](mailto:seaford@hopscotchmail.com)



01323 492123



## Any questions?

You can speak to your nursery manager, or email our Head Office at [office@hopscotchmail.com](mailto:office@hopscotchmail.com)

